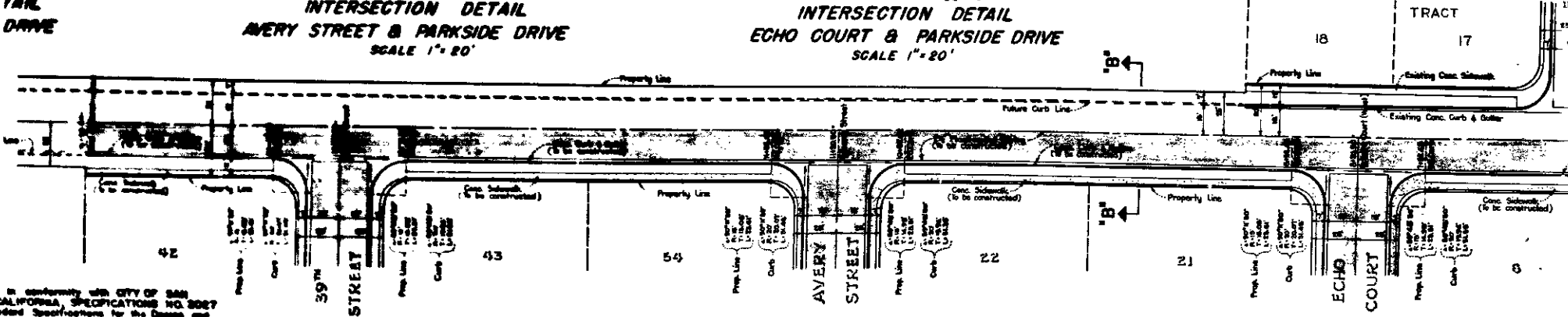
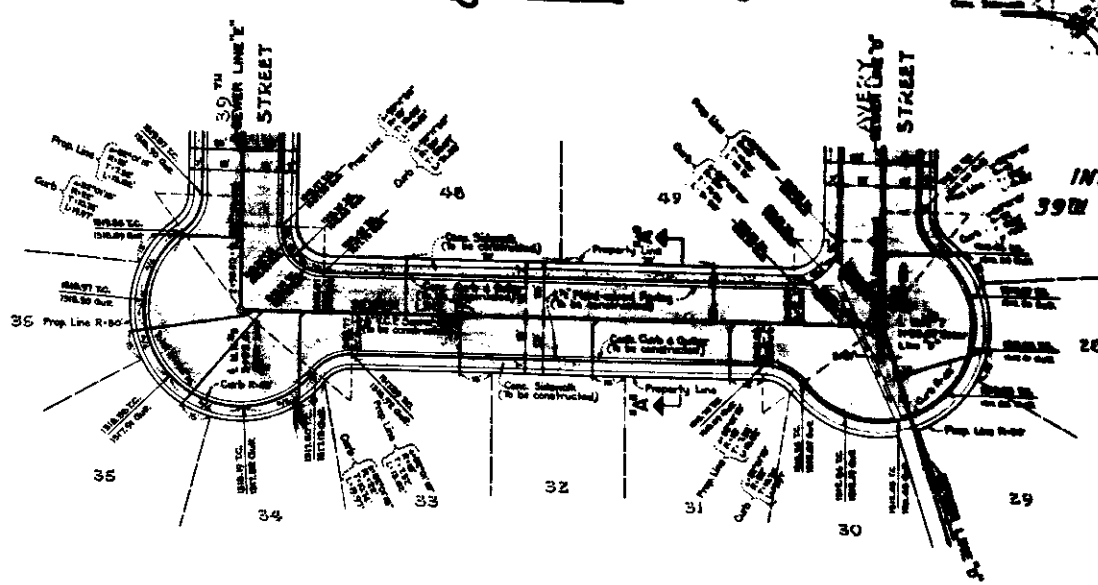
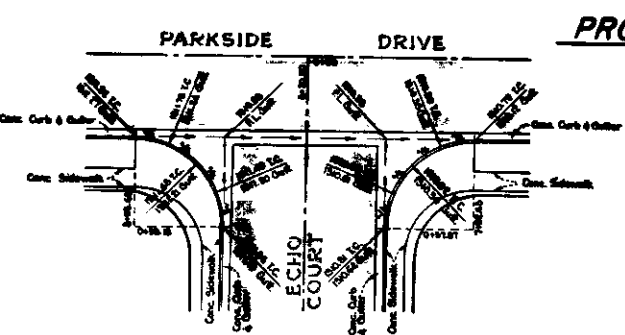
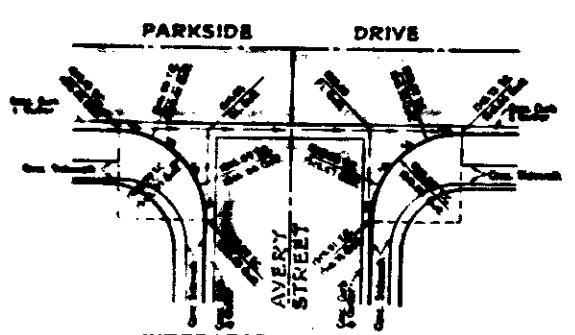
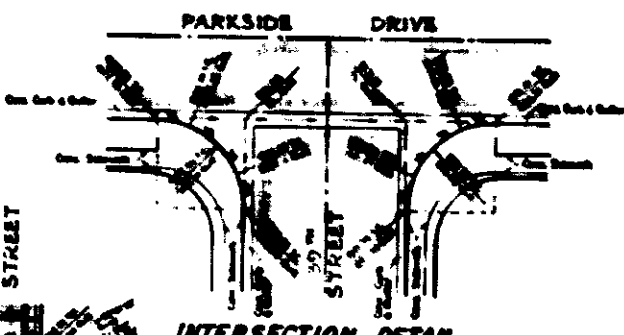


PROFILE - BROADMOOR BOULEVARD
 SCALE: HORIZONTAL 1"=40'
 VERTICAL 1"=4'

PROFILE - PARKSIDE DRIVE
 SCALE: HORIZONTAL 1"=40'
 VERTICAL 1"=4'



NOTES:
 1. All construction shall be in conformity with CITY OF SAN FRANCISCO, STATE OF CALIFORNIA, SPECIFICATIONS NO. 5027 (REVISED NOV 1952) Standard Specifications for the Design and Construction of Improvements in Public Streets, Alleys, Ways, and in New Subdivisions.
 2. The Contractor shall consult himself with the location of all utility installations and other improvements within the contract area and utilize the necessary precautions required to avoid damage to such utilities and other improvements.
 3. Prior to construction the Contractor shall measure the end of the existing V.C.P. sewer main to which his installation is to be joined and verify its location and elevation. After such verification, the gradient of sewer line 'A' between the Existing Manhole and Manhole '1' may be adjusted so as to provide an approved connection. The balance of the construction shall be completed as shown herein.